

2025 NEAS CONFERENCE

Aerial UTS Function Centre - Sydney



From Classroom to Community

Dr Susan Delahunty, Sun Pacific College

Pathways to Belonging

Our Role in Building Communities

22-23 MAY
2025

neas.org.au



About Sun Pacific College



**Pathways to
Belonging**

Our Role in Building Communities



neas.org.au



Community Collaboration

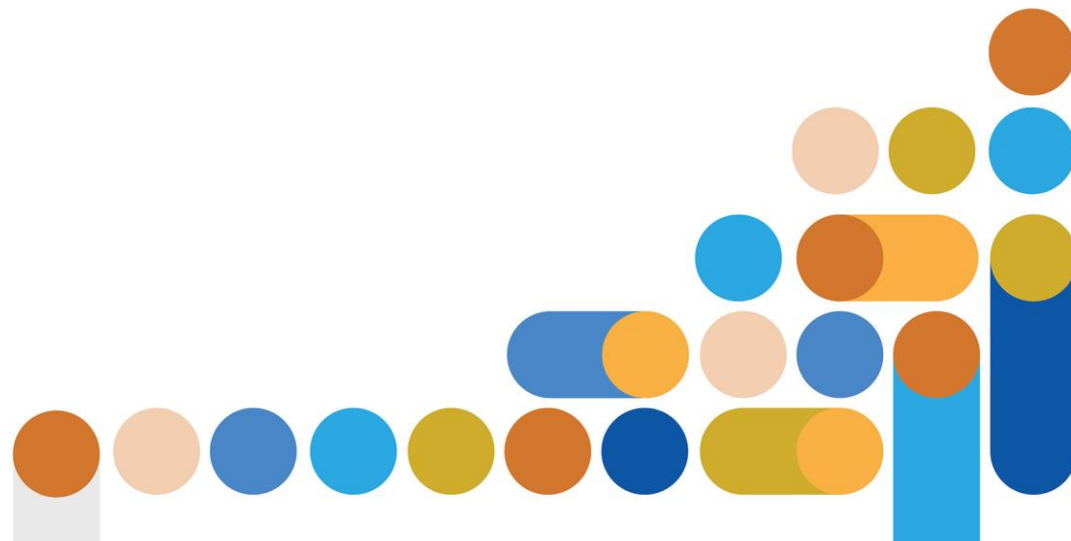
It's Story Time

**Pathways to
Belonging**

Our Role in Building Communities



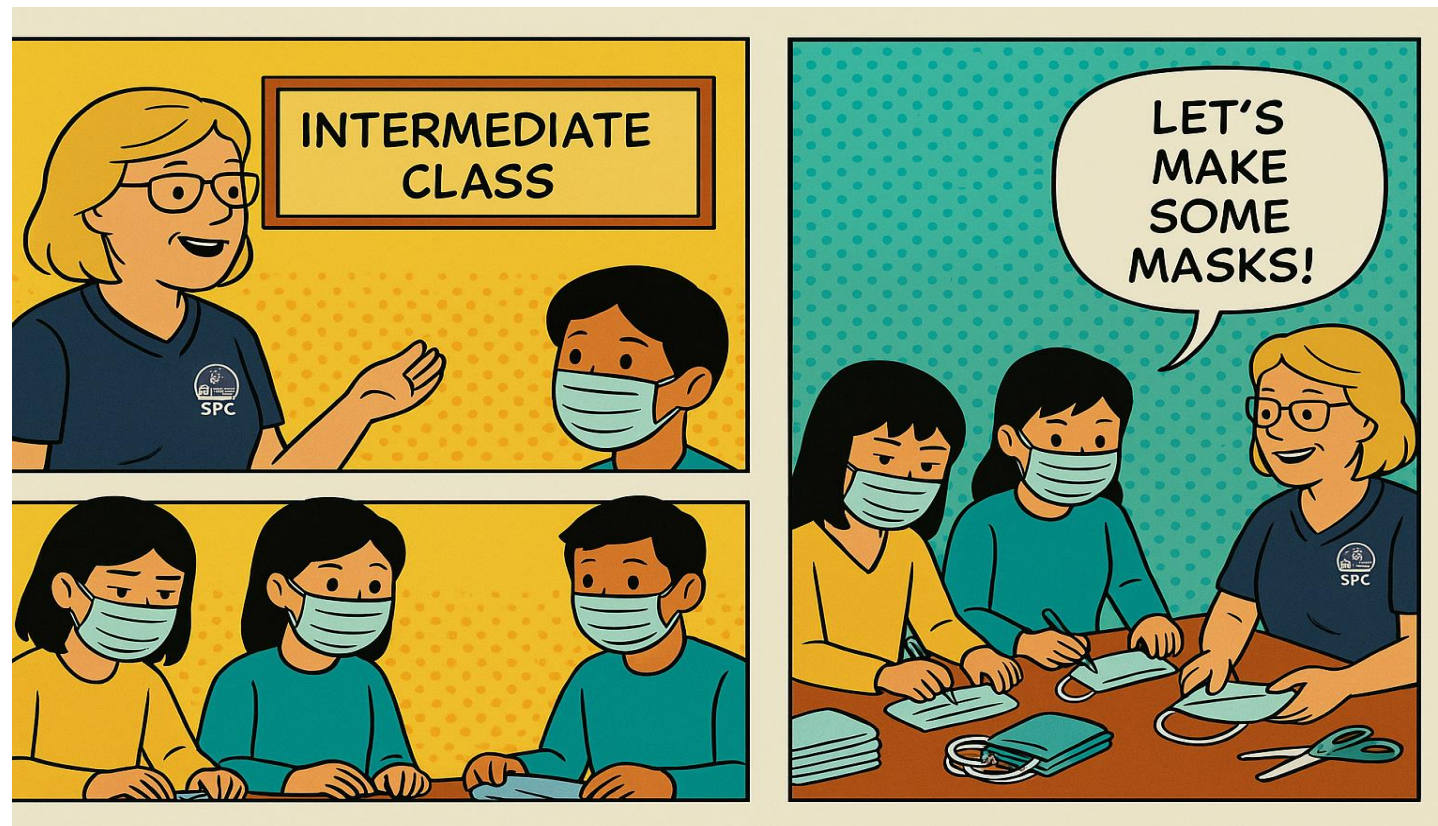
neas.org.au



STORY 1 – COVID Masks

Students made masks while learning English

We never taught online throughout COVID



**Pathways to
Belonging**

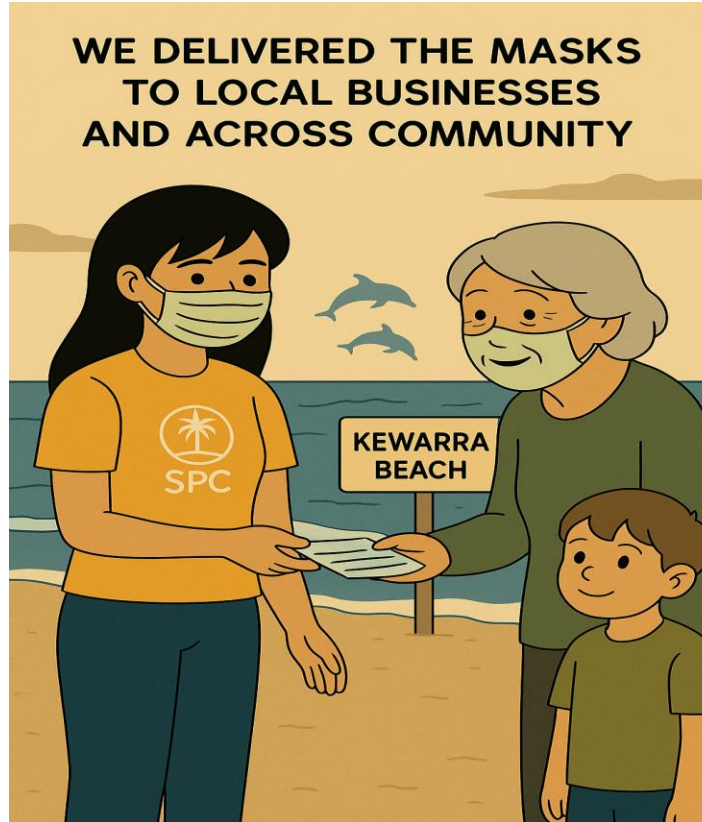
Our Role in Building Communities



neas.org.au



STORY 1 – COVID Masks



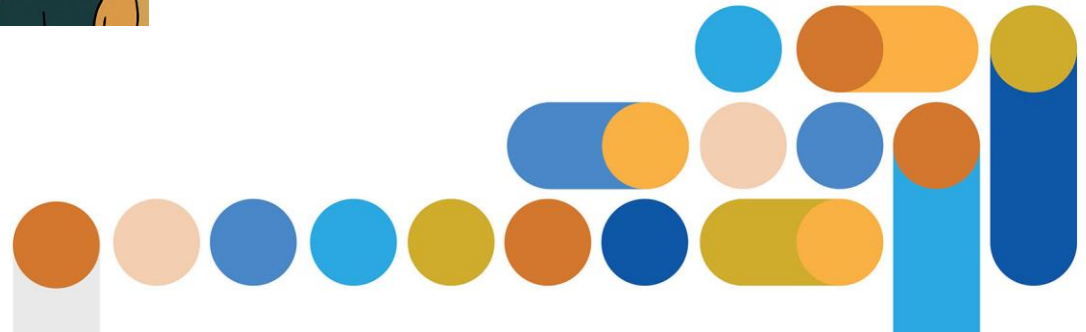
- We went door knocking and gave away free masks
- Provided masks to local businesses

**Pathways to
Belonging**

Our Role in Building Communities



neas.org.au



STORY 2 – Eat all You Can

- We opened up our community engagement with “all you can” meals for \$15.00



- BYO and we offered free accommodation in the dormitory if families wanted a stop over

**Pathways to
Belonging**

Our Role in Building Communities



neas.org.au



STORY 3 – Working with the Government



This initiative saved the mango and banana plantations across Far North Queensland



**Pathways to
Belonging**

Our Role in Building Communities



neas.org.au



STORY 4 – Helping Family Businesses



Mobile Coffee and Swimming Coach used free facilities and SPC helped with marketing

**Pathways to
Belonging**

Our Role in Building Communities



neas.org.au



Was it worth it?

- I never realised how community collaboration could be so beneficial:

With local schools only...

One High School now uses the Pool on Tuesday and Thursday (paid)

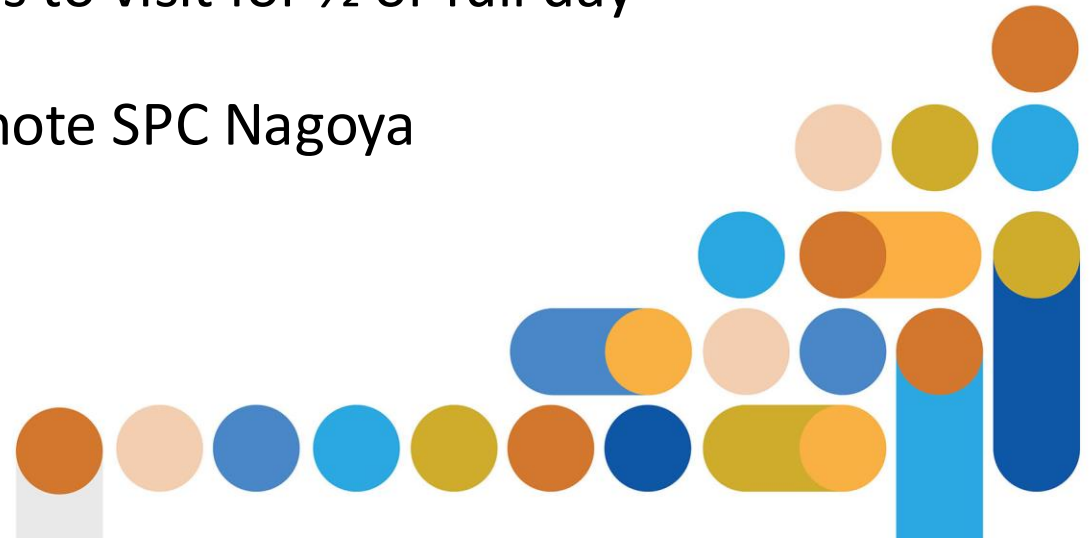
- Local Schools offering Chinese and Japanese request “immersion” days at SPC (paid)
- Study tour groups are welcomed by local schools to visit for ½ or full day
- SPC are invited to Career Nights where we promote SPC Nagoya

**Pathways to
Belonging**

Our Role in Building Communities



neas.org.au



Other benefits

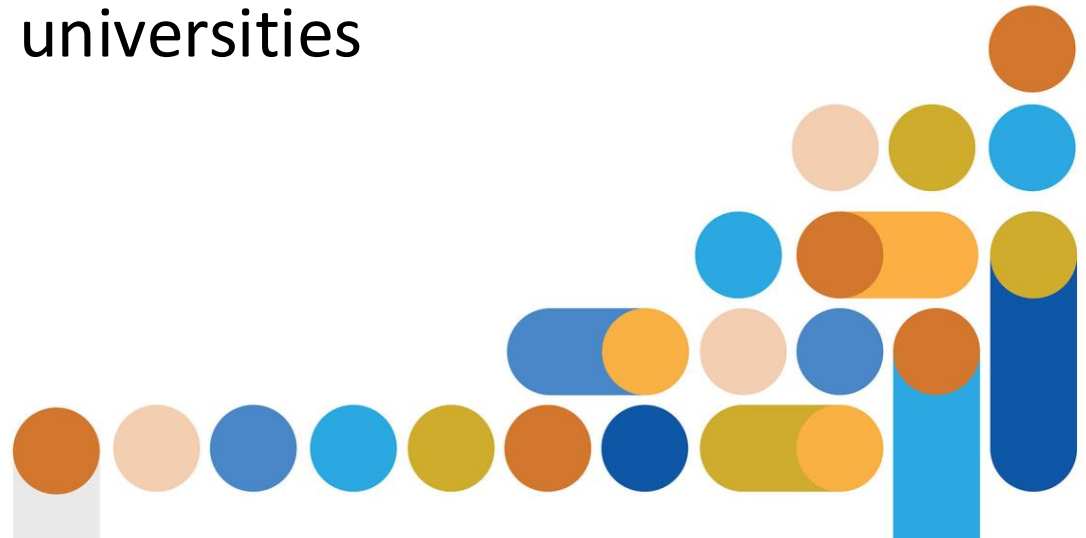
- 700+ local homestay placements now enabled and ready to go for the busy season
- Student employment opportunities with local businesses
- Schools invite SPC to present SPC Nagoya to Year 11 and 12 students
- Word-of-mouth enrolments from friends & family (many European nationals)
- Invitations from local gov, Dept of Trade & universities
- Extra income via local language classes

**Pathways to
Belonging**

Our Role in Building Communities



neas.org.au



What can you do? Some ideas...

You don't need big facilities to engage meaningfully!

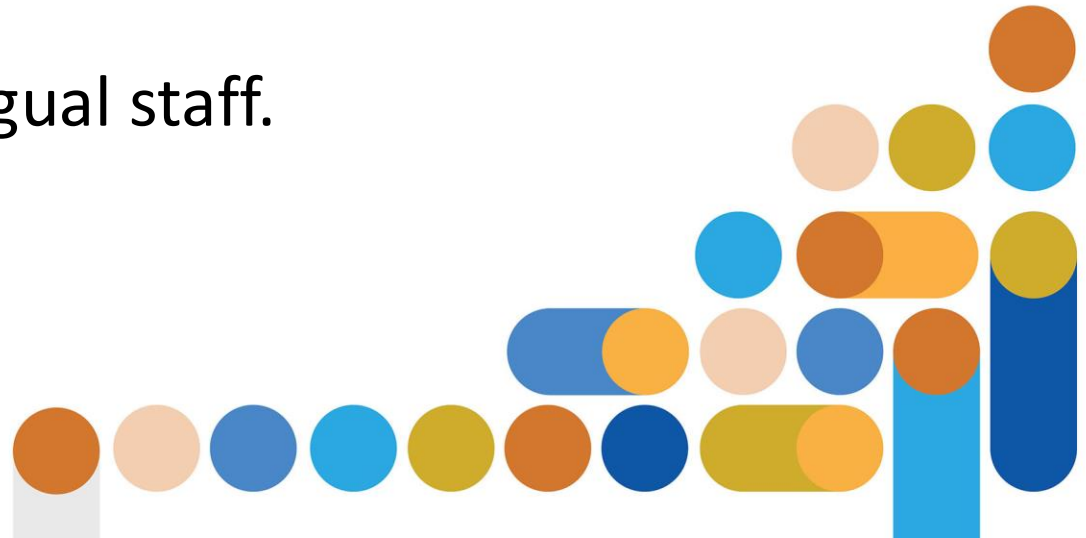
- Connect with local businesses for student jobs.
- Build relationships with cafes and shop owners.
- Use local services – e.g. haircuts at school.
- Host open nights to showcase students.
- Offer foreign language classes via multilingual staff.

**Pathways to
Belonging**

Our Role in Building Communities



neas.org.au



Final thought

Just needs a bit creative thinking
and your business opens up
to the local community

**Pathways to
Belonging**

Our Role in Building Communities



neas.org.au

